



RICHMOND HOUSE

CRICHESTER  
ORTHODONTIC CLINIC

BEAUTY & LASER CLINIC





# Westgate, Chichester, West Sussex PO19

A beautifully bright and spacious one-bedroom apartment set within an elegant Georgian townhouse, moments from the heart of Chichester.



1



1



1



C

- One Double Bedroom
- No onward chain
- Open Plan Living/Kitchen
- Modern Shower Room
- Large Sash Windows
- High Ceilings
- Short Walk to City Centre
- Ideal First Time or Investment

Positioned on the first floor of Richmond House, a handsome Grade II listed building on the highly sought-after Westgate, this superb apartment blends period charm with contemporary living.

The property offers over 700 sq ft of well-proportioned accommodation, with impressively high ceilings and tall sash windows creating an abundance of natural light throughout. The open-plan living space is arranged for modern life, featuring a stylish kitchen with breakfast bar, room for dining and a comfortable sitting area, all with characterful wide plank flooring underfoot.

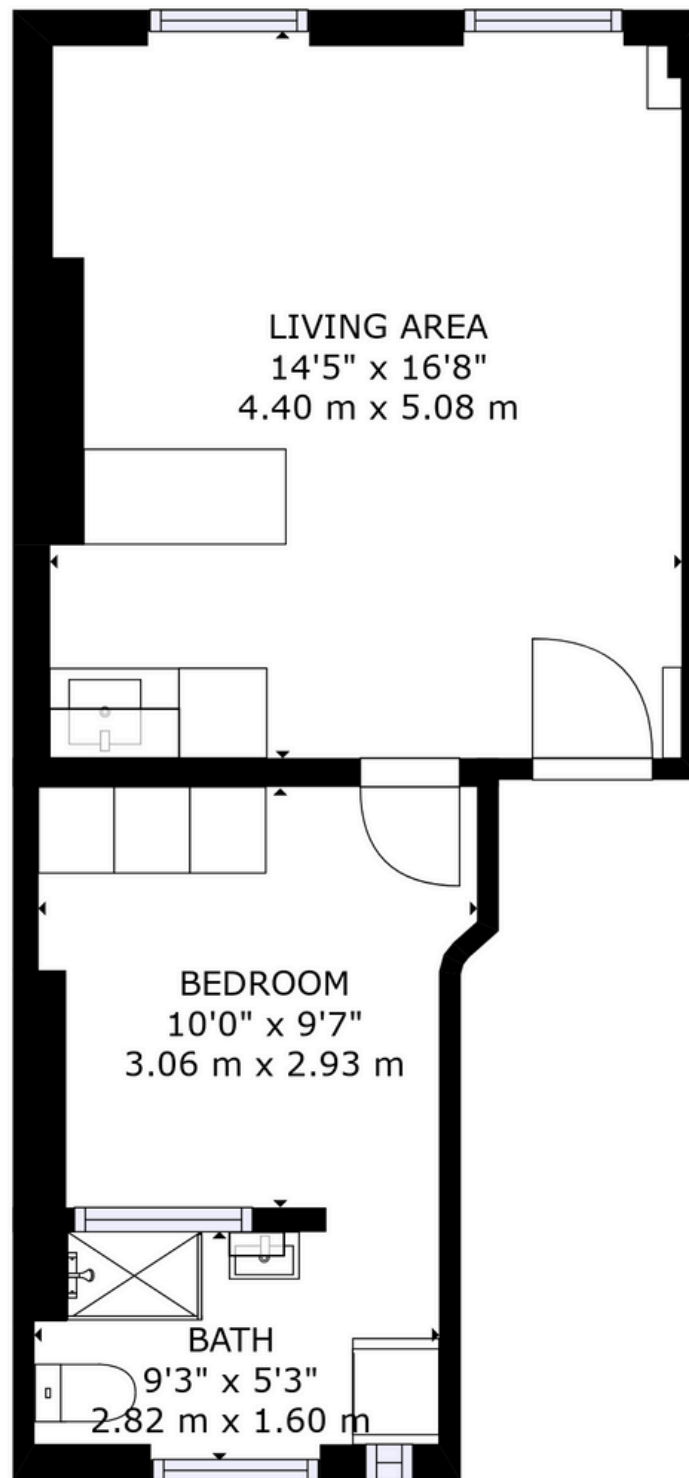
A generous double bedroom provides a calm retreat, tucked away from the main living space, and the modern shower room is smartly finished with clean lines and quality fittings.

This charming apartment offers an exceptional lifestyle opportunity just a short stroll from Chichester's bustling city centre, with its boutique shops, cafes, restaurants, and cultural attractions including the Festival Theatre and Pallant House Gallery. The railway station, Cathedral, and city walls are all within walking distance, while the surrounding South Downs and Chichester Harbour provide stunning nearby escapes.

Whether you are a first-time buyer, downsizer or looking for a smart investment or weekend home, this is a property that delivers style, space, and a prime central location.



Agents Note - Our particulars are for guidance only and are intended to give a fair overall summary of the property. They do not form part of any contract or offer, and should not be relied upon as a statement or representation of fact. Measurements, areas and distances are approximate only. Photographs may include lifestyle shots and pictures of local views. No undertaking is given as to the structural condition of the property, or any necessary consents or operating ability or efficiency of any service, system or appliance. Please ask if you would like further information, especially before you travel to the property.







Viewing Strictly by arrangement via the sellers sole agents - PMS Lettings & Sales 01243 788257